

Apollo MCU

Design Guidelines

Doc. ID: DG-A1-1p00

Revision 1.0

March 2017

Table of Content

1. Introduction	5
2. Document Revision History	5
3. Design Guidelines Summary List	5
4. Detailed Design Guidelines	5
4.1 General Power Considerations	6
4.2 32.768 kHz Crystal Selection and Calibration	9
4.3 Reset Design Considerations	12
4.4 ADC Input Characteristics	14
4.5 Debug Connections	16
4.6 IOM/IOS Connections	18

List of Figures

Figure 1. Updated Buck Converter Schematic, Showing C3 Value as 2.0 μ F	7
Figure 2. External Oscillator Example Connection	11
Figure 3. Recommended Reset Filter Circuit	12
Figure 4. Apollo SWD Circuit Using a Standard 2x5 Header	17
Figure 5. Apollo SWD Circuit Using a 2x3 Tag Connector	17

List of Tables

Table 1: Document Revision History	5
Table 2: List of Design Guidelines	5

Design Guidelines for the Apollo MCU (APOLLO512-xxx)

1. Introduction

This document is a compilation of detailed design guidelines for the Apollo MCU.

2. Document Revision History

Table 1: Document Revision History

Rev #	Date	Description
1.0	Feb 2017	Document initial public release

3. Design Guidelines Summary List

See Table 2 for a summary of the design guidelines described in this document. This table lists each design guideline by reference number and title, and a link to its detailed information.

Table 2: List of Design Guidelines

Design Guidelines
"General Power Considerations" on page 6
"32.768 kHz Crystal Selection and Calibration" on page 9
"Reset Design Considerations" on page 12
"ADC Input Characteristics" on page 14
"Debug Connections" on page 16
"IOM/IOS Connections" on page 18

4. Detailed Design Guidelines

This section contains the design guidelines. Information covered in each design guideline includes at minimum the following:

- **Design Guideline Reference Number and Title** – Lists reference number and title of the design guidelines topic
- **Overview** – Provides an overview of what is addressed in the design guidelines
- **Applicable Silicon Revisions** – Specifies the silicon revisions to which the design guideline applies
- **Application Impact** – Describes the impact of the addressed issue(s) on a user application
- **Guidelines** – Provides details of the design guidelines

4.1 General Power Considerations

4.1.1 Overview

These design guidelines describe device-level power requirements for Apollo. Consult the Electrical Characteristics chapter of the Apollo Datasheet for operating specifications, and ensure that these specifications are always met.

4.1.2 Applicable Silicon Revisions

These design recommendations apply to all versions and packages of Apollo silicon, APOLLO512-xxx.

4.1.3 Application Impact

The power guidelines are intended to ensure reliable low-power operation. Not adhering to these recommendations may result in unnecessary power consumption and, in some cases, unreliable operation of the Apollo MCU.

4.1.4 Guidelines

4.1.4.1 Power Supply Decoupling

Minimum required power supply decoupling is:

- 1 μ F on V_{DDP}
- 0.1 μ F on V_{DDA}
- 0.1 μ F on V_{DDH}

Although the minimum decoupling capacitance on V_{DDP} is 1 μ F, it is recommended to include a larger capacitor in the range of 2 μ F to 10 μ F depending on the transient loads in the system. The Apollo V_{DDP} input has a maximum allowed slew rate of 2 kV/s, and this extra decoupling capacitance on V_{DDP} may be required if there are high transient loads on the V_{DDP} rail.

This capacitance can be adjusted down to the lowest necessary to prevent the V_{DDP} slew rate from exceeding the 2 kV/s limit for Apollo (but should not be reduced below 1 μ F).

4.1.4.2 DC-DC Buck - Inductors and Capacitors

Apollo features two built-in Buck converters optimized for a low-power environments, featuring ultra-low quiescent current and an integrated power switch. Therefore, only an external inductor and capacitor are needed for each converter to enable very high efficiency power input for the MCU core, SRAM, Flash memory, analog blocks and digital logic.

To ensure best performance across process, voltage and temperature, voltage and temperature, additional capacitance is needed at the VOUT1 Buck converter output to help reduce ripple. Compared to older Apollo example schematics, the VOUT1 output capacitor must be increased from 1 μ F to 2 μ F. Using

a standard capacitor value of 2.2 μF is also acceptable. See Figure 1 below for an updated Buck converter example schematic.

- 2 μF on VOUT1
- 1 μF on VOUT2

Buck mode operation provides much higher power efficiency in active mode but requires the use of inductors.

The same size and type is recommended for both VOUT1 (core) inductor and VOUT2 (memory) inductor. There is an option for choosing the size and type of these inductors. If a smaller footprint is required in the design at the expense of slightly higher current draw, then the recommendation is a 0603 SMT package from Taiyo Yuden:

MBKK1608T2R2M (2.2 μH , .345 Ω , 750 mA current rating, 520 mA saturation current)

If better buck efficiency (up to 5% lower current draw) is needed at the expense of a larger package, then the recommendation is a 0806 SMT package from Bourns:

SRN2010TA-2R2M (2.2 μH , .145 Ω , 1.2 A current rating, 1.26A saturation current)

If another pair of inductors is selected, it is recommended to ensure 500 mA or higher saturation current for both outputs.

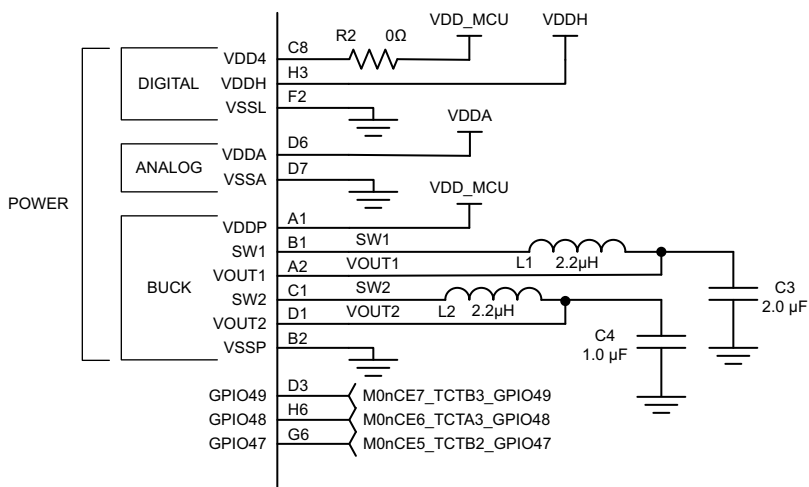


Figure 1. Updated Buck Converter Schematic, Showing C3 Value as 2.0 μF

4.1.4.3 Input Supply Voltage and Rising POR Threshold

The Apollo device is designed to work with input power supplies between 1.8 V and 3.8 V, after a power-on reset condition has been de-asserted. However, to de-assert the power-on reset condition, a supply voltage higher than the POR threshold of ≥ 2.05 V must be applied to the device for at minimum 100 ms. After that condition is satisfied, system reset is de-asserted and normal MCU operation proceeds.

Typical power supply designs do not allow for a short 100 ms voltage pulse of ≥ 2.05 V, followed by a steady-state value of around 1.8 V. Therefore, Ambiq Micro recommends that most customers use a

voltage supply at minimum of 2.1 V to power the Apollo MCU, unless such a voltage sequence is possible in their design.

All Apollo supplies must be provided the same voltage such that $V_{DDP} = V_{DDH} = V_{DDA}$.

4.2 32.768 kHz Crystal Selection and Calibration

4.2.1 Overview

These design guidelines outline crystal selection considerations and crystal calibration during manufacturing for on an Apollo design.

4.2.2 Applicable Silicon Revisions

These design guidelines apply to all versions and packages of Apollo silicon, APOLLO512-xxx.

4.2.3 Application Impact

Proper selection of the crystal and design of the crystal circuit should be made to ensure required clock accuracy and reliable operation.

4.2.4 Guidelines

4.2.4.1 32.768 kHz Crystal and Load Capacitors

The Apollo MCU clock generator module includes a high-precision crystal-controlled oscillator that works in conjunction with an external 32.768 kHz tuning fork crystal. The crystal oscillator includes a distributed digital calibration function that can be used to calibrate the 16 kHz level of the internal MCU clock divider chain to within ± 1 ppm accuracy.

The crystal oscillator is designed to run without the use of external load capacitors, and use the digital calibration function to create a highly accurate clock for internal use. Not using external load capacitors significantly increases oscillator allowance, and allows for a reduction in crystal bias current, which results in lower power consumption. Lower power consumption is often most beneficial when the MCU is in deep sleep mode, but needs to keep the crystal oscillator running as an accurate time source for the RTC module.

The following parameters should be used for the crystal and the crystal circuit:

1. Crystal load capacitance rating: 0 – 12 pF
2. Crystal ESR rating: 0 – 90 k Ω max
3. No external load capacitors on the board
 - a. 4 pF or smaller external load capacitor⁽¹⁾ (4.7 pF total external capacitance) if low-ppm non-calibrated 32 kHz clock is required.

Crystals which have been tested with the Ambiq Micro crystal circuit are the following:

- Abracon: ABS07-32.768KHZ-7-T, ABS06-32.768KHZ-9-T, ABS25.32.768KHZ-T

-
1. No external load capacitors result in a couple hundred ppm error with a 32 kHz clock, which is compensated by a digital calibration to create low-ppm 16 kHz clock for general use and 100 Hz clock for RTC.

- Epson: C-002RX, FC-135, FC-12D, FC-12M
- Microcrystal: CC7V-T1A, CM7V-T1A

All crystals were tested with no external load capacitors.

General Notes:

1. Ambiq Micro typically generates an oscillator allowance of at least 500 k Ω following the guidelines above. Increasing the load capacitance on the XI/XO pins will decrease the oscillator allowance, and using crystals with a higher ESR will reduce the oscillator allowance margin.
2. Common size crystals (3.2 mm x 1.5 mm) generally have a maximum ESR rating of 70 k Ω . The very small 2.0 mm x 1.2 mm crystals generally have a maximum ESR of 90 k Ω , but some crystal vendors, such as Abracon, Epson, or Microcrystal, will have some of the smaller crystals with lower ESR.
3. No external load capacitance is required because the RTC clock source can be digitally calibrated (to within +/- 1 ppm of externally provided reference clock at a single temperature calibration point). If a precisely tuned raw 32.768 kHz crystal oscillator frequency is needed (such as for exporting 32.768 kHz clock to BLE device that requires less than a couple hundred ppm of deviation), then external load capacitors need to be added to the PCB just like the traditional method of tuning crystal frequency. In this case, the external load capacitor should be minimized by using a crystal rated for small-load capacitance and the actual external load capacitor should be kept as small as possible (4 pF maximum).
4. Apollo should work with any standard 32.768 kHz tuning fork crystal that meets the above guidelines. Contact Ambiq Micro Support if there is another specific crystal that you would like to use.

4.2.4.2 32 kHz Crystal Calibration during Manufacturing

Apollo has calibration logic which may be used to measure the frequency of an internal clock signal relative to the frequency of an externally provided reference clock. To enable a fast calibration, the reference clock should be between 1 MHz and 10 MHz, and should be a 1 ppm or better reference clock to enable accurate calibration. This reference clock may be input to either GPIO15 or GPIO25, so one of these pins should be made available to test fixture connections to enable calibration during manufacturing flow.

4.2.4.3 External Clock Input to XO/XI

An external 32 kHz clock can be fed into the Apollo XO pin (not XI pin). Due to design requirements, some customers prefer to use an external oscillator (XO) device, or a temperature-controlled external oscillator (TCXO) as a replacement for the 32.768 kHz crystal. The Apollo MCU crystal oscillator was not originally designed to support these kinds of inputs but can be adapted to work with them.

The crystal-controlled oscillator circuit expects an input between 150 and 250 mV peak-to-peak, with a nominal value of 200 mV peak-to-peak. Typically, XO-type devices have a much higher output voltage, and must be AC-coupled into the Apollo oscillator input. To do so, Ambiq Micro recommends using a capacitive divider between the XO/TCXO output and the XO pin of the device. The XI pin must not be left floating. Instead, a 1 nF capacitor should connect the XI pin to the MCU's ground. See Figure 2 for an example of a circuit illustrating the recommended connection.

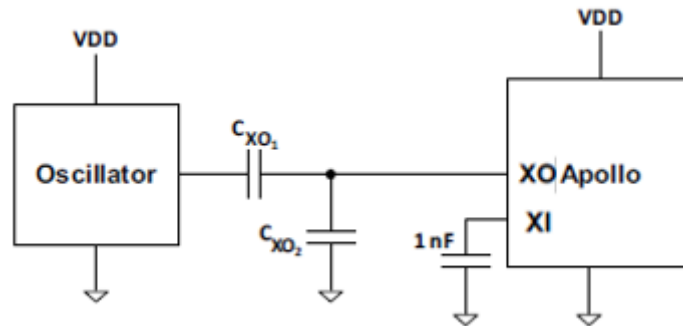


Figure 2. External Oscillator Example Connection

4.3 Reset Design Considerations

4.3.1 Overview

This design guideline describes how to protect from resets caused by spurious pulses from external EMI/crosstalk sources. Any noise spike of sufficient amplitude to instantaneously drop V_{DD} below the V_{IL} threshold, even as short as 200 ps in duration, can cause an unwanted and unexpected reset of the Apollo MCU on nRST.

4.3.2 Applicable Silicon Revisions

This design guideline applies to all versions and packages of Apollo silicon, APOLLO512-xxx.

4.3.3 Application Impact

Disruption of normal operation may occur due to unexpected resets caused by spurious noise pulses as short as 200 ps.

4.3.4 Guidelines

The solution for this issue is to add a capacitor between the nRST pin and ground to attenuate/filter such negative voltage incursions, and add a pull-up resistor on the nRST pin. See Figure 3 below.

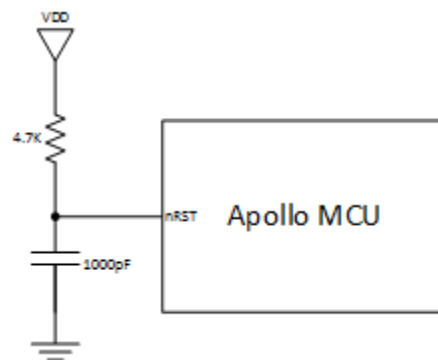


Figure 3. Recommended Reset Filter Circuit

The value of the filter capacitor is selected based on the assumption that the rise time and fall time of the spurious signal is 1 ns. A 4.7 k Ω pullup resistor is added to the nRST signal. Assuming a 3.3 V supply, the minimum value for the filter capacitor is determined as follows (to limit ripple on the nRST line to a maximum of 5 mV):

For current, I ,

$$I = \frac{V_{DD}}{R} = \frac{3.3 \text{ V}}{4.7 \text{ k}\Omega} \approx 700 \mu\text{A}$$

and for minimum capacitance, C_{min} ,

$$C_{min} = I \times \frac{1 \text{ ns}}{5 \text{ mV}}$$

then

$$C_{min} \approx 150 \text{ pF}$$

While 150 pF will work, 1000 pF is recommended to ensure sufficient filtering in all environments and it is a very common value. For these reset circuit components, consider that an intentional reset pulse should be at least 2 time constants of this R-C combination to ensure that the reset pulse is of sufficient duration below V_{IL} . The time constant, τ , for the above R-C values is 4.7 μs , so a valid reset pulse of at least 15 μs would meet a two time constant guideline, which is recommended. Note that the reset pulse of a typical external debugger is at least 50 μs .

4.4 ADC Input Characteristics

4.4.1 Overview

These design guidelines describe hardware requirements for Apollo ADC inputs.

4.4.2 Applicable Silicon Revisions

These design guidelines apply to all versions and packages of Apollo silicon, APOLLO512-xxx.

4.4.3 Application Impact

Adequate sample-and-hold time must be allowed to enable target conversion accuracy.

4.4.4 Guidelines

4.4.4.1 Calculating Minimum ADC Sample-and-Hold Time

The ADC on the Apollo is a successive approximation register (SAR) ADC with 10 pF input capacitance. If there is large input impedance to the ADC input, then the sample-and-hold time must be increased to ensure the 10 pF sampling capacitor has time to settle.

A rough estimation of time constant is:

$$\text{Time constant } (\tau) = \text{Input impedance (k}\Omega\text{)} \times \text{ADC input Capacitance (pF)}$$

Assuming no external capacitance on the ADC input, a conservative value of 12 pF (the 10 pF ADC capacitance plus a couple pF for package pin impedance) can be used.

An example calculation for 100 k Ω input impedance (such as if a 200 k Ω resistive divider is used for battery measurement) is:

$$\tau = 100 \text{ k}\Omega \times 12 \text{ pF} = 1.2 \mu\text{s}$$

The required hold time to guarantee that the capacitance has settled (charged/discharged) to meet target accuracy is:

- 5% accuracy: $3 * 1.2 \mu\text{s} = 3.6 \mu\text{s}$
- 1% accuracy: $5 * 1.2 \mu\text{s} = 6 \mu\text{s}$
- 10-bit accuracy: $7 * 1.2 \mu\text{s} = 8.4 \mu\text{s}$

Apollo allows the sample/hold time to be specified in the number of ADC clocks. If you have ADC configured to use 1.5 MHz ADC clock, then the sample-and-hold setting of 8 cycles provides $\sim 5 \mu\text{s}$. In this example, if higher than 1% accuracy is required, then the ADC clock would need to be adjusted accordingly.

4.4.4.2 ADC Channel 0 Input Leakage

The Apollo ADC supports 13 user-selectable input channels, eight of which are external GPIO inputs. ADC external inputs 1 through 7 have an input leakage current specification of typically 0.1 nA, with a maximum leakage of 20 nA. ADC external input 0 has a much higher input leakage current, typically 5 μ A, but as high as 10 μ A.

The additional leakage current on external input 0 can create a noticeable offset in ADC samples, depending on the output impedance of the signal source being measured. Customers using external input 0 must be aware of this additional leakage and account for it when selecting a signal source to be sampled, or use one of the other seven external inputs.

4.5 Debug Connections

4.5.1 Overview

These design guidelines describe hardware design requirements for debugging on an Apollo board.

4.5.2 Applicable Silicon Revisions

These design guidelines apply to all versions and packages of Apollo silicon, APOLLO512-xxx.

4.5.3 Application Impact

Following these recommendations ensures proper connection and reliable operation while debugging the application.

4.5.4 Guidelines

4.5.4.1 SWD Debug Line Termination

It is required to include the following debug signal terminations:

- GPIO20/SWDCK: 10 k Ω pull-down to V_{SS}
- GPIO21/SWDIO: 10 k Ω pull-up to V_{DD}

4.5.4.2 Cortex SWD Debug Connector

As shown in Figure 4 below, it is recommended to bring DBG_CONN_SWCLK (SWDCK), DBG_CONN_SWDIO (SWDIO), TRIG4_SWO_GPIOI41 (SWO), NRST (nRST), VDD_DBG (V_{DD}) and GND to a debug header to enable full functionality of external Cortex debuggers and flash programmers.

The [standard Cortex debug header](#) on the Apollo EVK is useful for boards that are not space constrained. A popular manufacturer is Samsung, and the ordering information for the required header is: [Samtec FTSH-105-01](#)

-

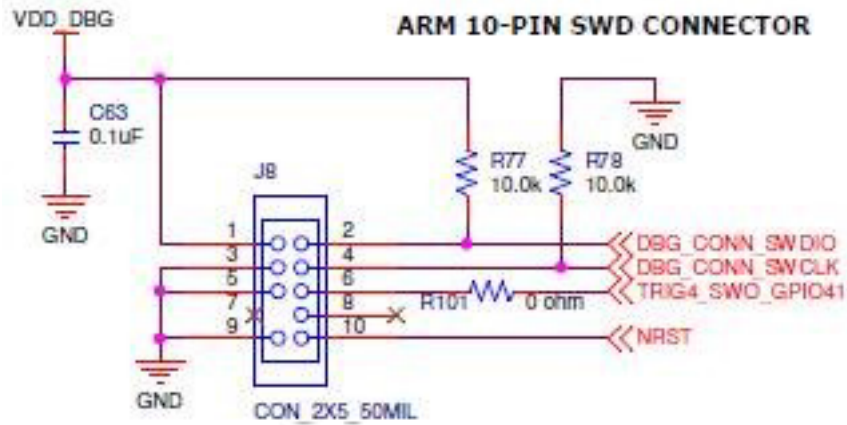


Figure 4. Apollo SWD Circuit Using a Standard 2x5 Header

An alternate SWD connector such as Tag-Connect is recommended for more space constrained designs. The TC2030-CTX 6-Pin Cable for ARM Cortex ([TC2030-CTX](http://www.tag-connect.com/tag-connect-pinout-specifications)) is used for the mini-connector, and its pinout specification is described here - <http://www.tag-connect.com/tag-connect-pinout-specifications>

TAG-CONNECT SWD CONNECTOR

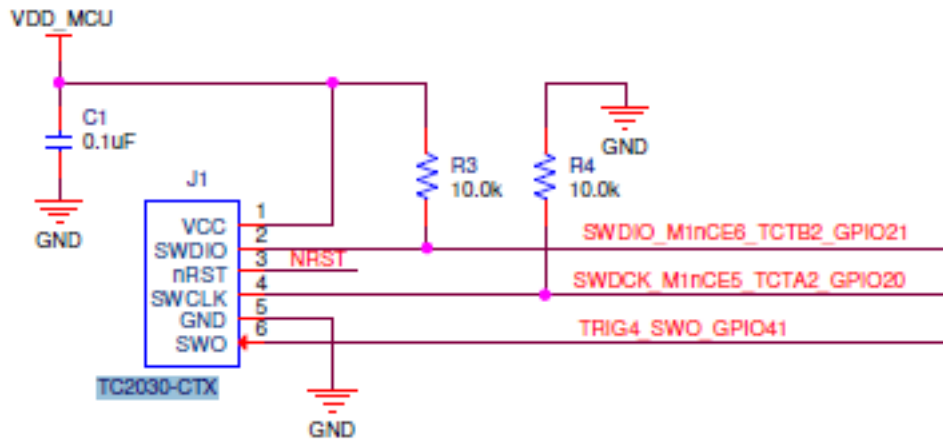


Figure 5. Apollo SWD Circuit Using a 2x3 Tag Connector

4.6 IOM/IOS Connections

4.6.1 Overview

This design guideline describes hardware design requirements for the IOM and IOS modules.

4.6.2 Applicable Silicon Revisions

This design guideline applies to all versions and packages of Apollo silicon, APOLLO512-xxx.

4.6.3 Application Impact

Following these recommendations ensures proper connection and reliable operation for I2C and SPI communication in the IOM/IOS modules.

4.6.4 Guidelines

SPI and I2C Clock Termination

Apollo requires that a 100 Ω series resistor be included in-line with the SPI/I2C master clock lines (SCK and SCL).

Contact Information

Address	Ambiq Micro, Inc. 6500 River Place Blvd. Building 7, Suite 200 Austin, TX 78730-1156
Phone	+1 (512) 879-2850
Website	http://www.ambiqmicro.com/
General Information	info@ambiqmicro.com
Sales	sales@ambiqmicro.com
Technical Support	support@ambiqmicro.com

Legal Information and Disclaimers

AMBIQ MICRO INTENDS FOR THE CONTENT CONTAINED IN THE DOCUMENT TO BE ACCURATE AND RELIABLE. THIS CONTENT MAY, HOWEVER, CONTAIN TECHNICAL INACCURACIES, TYPOGRAPHICAL ERRORS OR OTHER MISTAKES. AMBIQ MICRO MAY MAKE CORRECTIONS OR OTHER CHANGES TO THIS CONTENT AT ANY TIME. AMBIQ MICRO AND ITS SUPPLIERS RESERVE THE RIGHT TO MAKE CORRECTIONS, MODIFICATIONS, ENHANCEMENTS, IMPROVEMENTS AND OTHER CHANGES TO ITS PRODUCTS, PROGRAMS AND SERVICES AT ANY TIME OR TO DISCONTINUE ANY PRODUCTS, PROGRAMS, OR SERVICES WITHOUT NOTICE.

THE CONTENT IN THIS DOCUMENT IS PROVIDED "AS IS". AMBIQ MICRO AND ITS RESPECTIVE SUPPLIERS MAKE NO REPRESENTATIONS ABOUT THE SUITABILITY OF THIS CONTENT FOR ANY PURPOSE AND DISCLAIM ALL WARRANTIES AND CONDITIONS WITH REGARD TO THIS CONTENT, INCLUDING BUT NOT LIMITED TO, ALL IMPLIED WARRANTIES AND CONDITIONS OF MERCHANTABILITY, FITNESS FOR A PARTICULAR PURPOSE, TITLE AND NON-INFRINGEMENT OF ANY THIRD PARTY INTELLECTUAL PROPERTY RIGHT.

AMBIQ MICRO DOES NOT WARRANT OR REPRESENT THAT ANY LICENSE, EITHER EXPRESS OR IMPLIED, IS GRANTED UNDER ANY PATENT RIGHT, COPYRIGHT, MASK WORK RIGHT, OR OTHER INTELLECTUAL PROPERTY RIGHT OF AMBIQ MICRO COVERING OR RELATING TO THIS CONTENT OR ANY COMBINATION, MACHINE, OR PROCESS TO WHICH THIS CONTENT RELATE OR WITH WHICH THIS CONTENT MAY BE USED.

USE OF THE INFORMATION IN THIS DOCUMENT MAY REQUIRE A LICENSE FROM A THIRD PARTY UNDER THE PATENTS OR OTHER INTELLECTUAL PROPERTY OF THAT THIRD PARTY, OR A LICENSE FROM AMBIQ MICRO UNDER THE PATENTS OR OTHER INTELLECTUAL PROPERTY OF AMBIQ MICRO.

INFORMATION IN THIS DOCUMENT IS PROVIDED SOLELY TO ENABLE SYSTEM AND SOFTWARE IMPLEMENTERS TO USE AMBIQ MICRO PRODUCTS. THERE ARE NO EXPRESS OR IMPLIED COPYRIGHT LICENSES GRANTED HEREUNDER TO DESIGN OR FABRICATE ANY INTEGRATED CIRCUITS OR INTEGRATED CIRCUITS BASED ON THE INFORMATION IN THIS DOCUMENT. AMBIQ MICRO RESERVES THE RIGHT TO MAKE CHANGES WITHOUT FURTHER NOTICE TO ANY PRODUCTS HEREIN. AMBIQ MICRO MAKES NO WARRANTY, REPRESENTATION OR GUARANTEE REGARDING THE SUITABILITY OF ITS PRODUCTS FOR ANY PARTICULAR PURPOSE, NOR DOES AMBIQ MICRO ASSUME ANY LIABILITY ARISING OUT OF THE APPLICATION OR USE OF ANY PRODUCT OR CIRCUIT, AND SPECIFICALLY DISCLAIMS ANY AND ALL LIABILITY, INCLUDING WITHOUT LIMITATION CONSEQUENTIAL OR INCIDENTAL DAMAGES. "TYPICAL" PARAMETERS WHICH MAY BE PROVIDED IN AMBIQ MICRO DATA SHEETS AND/OR SPECIFICATIONS CAN AND DO VARY IN DIFFERENT APPLICATIONS AND ACTUAL PERFORMANCE MAY VARY OVER TIME. ALL OPERATING PARAMETERS, INCLUDING "TYPICALS" MUST BE VALIDATED FOR EACH CUSTOMER APPLICATION BY CUSTOMER'S TECHNICAL EXPERTS. AMBIQ MICRO DOES NOT CONVEY ANY LICENSE UNDER NEITHER ITS PATENT RIGHTS NOR THE RIGHTS OF OTHERS. AMBIQ MICRO PRODUCTS ARE NOT DESIGNED, INTENDED, OR AUTHORIZED FOR USE AS COMPONENTS IN SYSTEMS INTENDED FOR SURGICAL IMPLANT INTO THE BODY, OR OTHER APPLICATIONS INTENDED TO SUPPORT OR SUSTAIN LIFE, OR FOR ANY OTHER APPLICATION IN WHICH THE FAILURE OF THE AMBIQ MICRO PRODUCT COULD CREATE A SITUATION WHERE PERSONAL INJURY OR DEATH MAY OCCUR. SHOULD BUYER PURCHASE OR USE AMBIQ MICRO PRODUCTS FOR ANY SUCH UNINTENDED OR UNAUTHORIZED APPLICATION, BUYER SHALL INDEMNIFY AND HOLD AMBIQ MICRO AND ITS OFFICERS, EMPLOYEES, SUBSIDIARIES, AFFILIATES, AND DISTRIBUTORS HARMLESS AGAINST ALL CLAIMS, COSTS, DAMAGES, AND EXPENSES, AND REASONABLE ATTORNEY FEES ARISING OUT OF, DIRECTLY OR INDIRECTLY, ANY CLAIM OF PERSONAL INJURY OR DEATH ASSOCIATED WITH SUCH UNINTENDED OR UNAUTHORIZED USE, EVEN IF SUCH CLAIM ALLEGES THAT AMBIQ MICRO WAS NEGLIGENT REGARDING THE DESIGN OR MANUFACTURE OF THE PART.